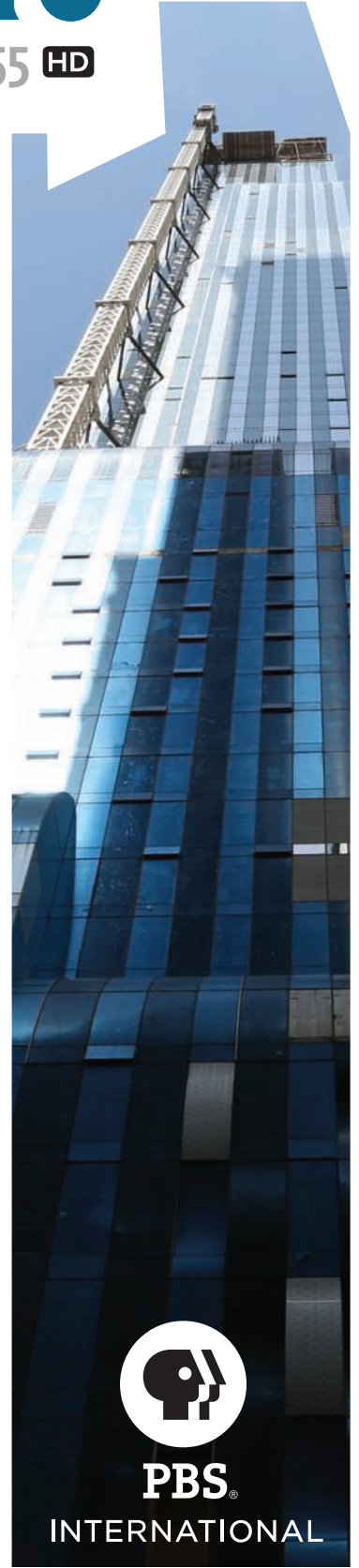
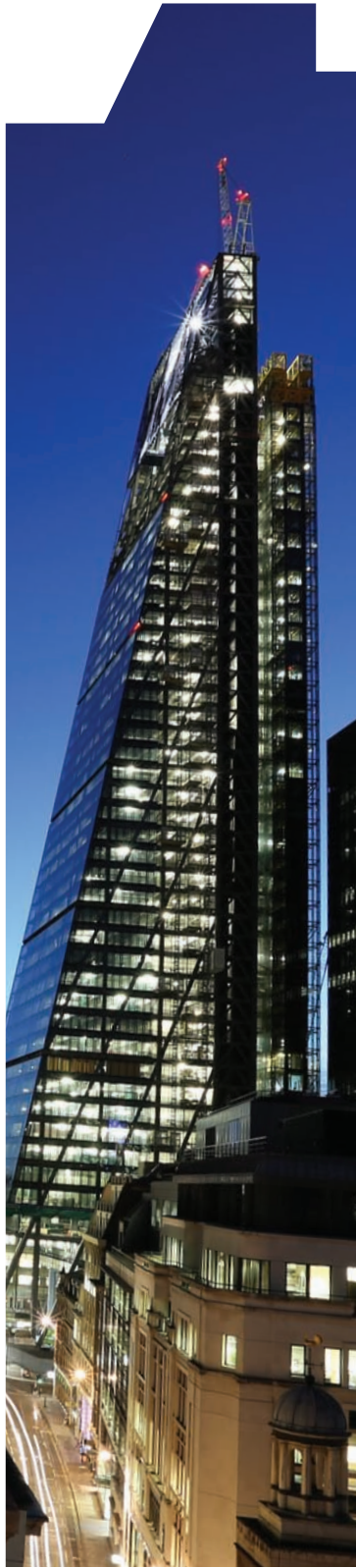


SUPER SKYSCRAPERS

4 x 55 HD



PBS®

INTERNATIONAL

SUPER SKYSCRAPERS

4 x 55 HD

CONTACT

Tom Koch, Vice President
PBS International
10 Guest Street
Boston, MA 02135 USA

TEL: +1-617-208-0735
FAX: +1-617-208-0783

jtkoch@pbs.org
pbsinternational.org

Around the world buildings are growing higher and faster than ever before, creating a new generation of skyscrapers that push the limits of engineering, technology, and design to become greener, stronger, and more luxurious. *Super Skyscrapers* follows the creation of extraordinary buildings and showcases how they revolutionize the ways we live, work, and entertain ourselves. Episodes of the four-part series include: *One World Trade Center*, *Building the Future*, *The Vertical City*, and *The Billionaire Building*.

When complete, China's Shanghai Tower will be far more than a skyscraper—it will be a 120-story vertical city—the country's tallest and the world's second-tallest building; a collection of businesses, services, and hotels boasting a population equal to the country of Monaco in a community built on a footprint the size of a football field. This episode goes behind Shanghai Tower's interior wall and exterior skin, a place where residents work, play, and relax in a series of eight stacked public parks, each more than 121 feet. Built with highly sustainable methods and earning one of China's best green ratings, the structure dominates Shanghai's skyline, towering over its neighbors as a testament to the city's economic success and the ambitions of its wealthy elite.

Recently judged to be the tallest building in the Western hemisphere, and soon to be a modern landmark in New York City, the structure featured in *One World Trade Center* is engineered to be the safest, strongest skyscraper ever built. This episode follows the final year of the edifice's exterior construction, culminating with the milestone of reaching 1,776 feet. For One World Trade Center's head of construction Steve Plate—and the scientists, engineers, ironworkers, and curtain-wall installers—this job is suffused with the history of the site and a sense of duty to rebuild from the ashes of Ground Zero.

Building the Future takes viewers in and around Leadenhall Building, a pinnacle of London's recent avant-garde architecture boom and popularly nicknamed "The Cheese Grater" for its tapered shape and steel exoskeleton. The construction of this newest Financial Center showpiece forced the team behind Leadenhall to radically rethink every aspect of the traditional building model: its pieces were constructed off-site, delivered to the location and stacked and bolted together like a giant Lego set.

Upon completion, One57 in Manhattan, dubbed the Billionaire Building, will rise more than 1,000 feet and 75 stories in the air, making it the tallest residential tower in the Western hemisphere and boasting unprecedented views of Central Park. This episode follows the teams tasked with creating, building, designing, and selling New York's most luxurious and most expensive residential skyscraper. Condominiums at One57 boast state-of-the-art interiors, including double-height ceilings, full-floor apartments, bathrooms clad in the finest Italian marble, and handmade kitchens from UK craftsmen.

150068

CREDITS

Series Executive Producers: Dan Oliver and Dan Chambers

Photos: Courtesy of Blink Films UK



PBS®

INTERNATIONAL